

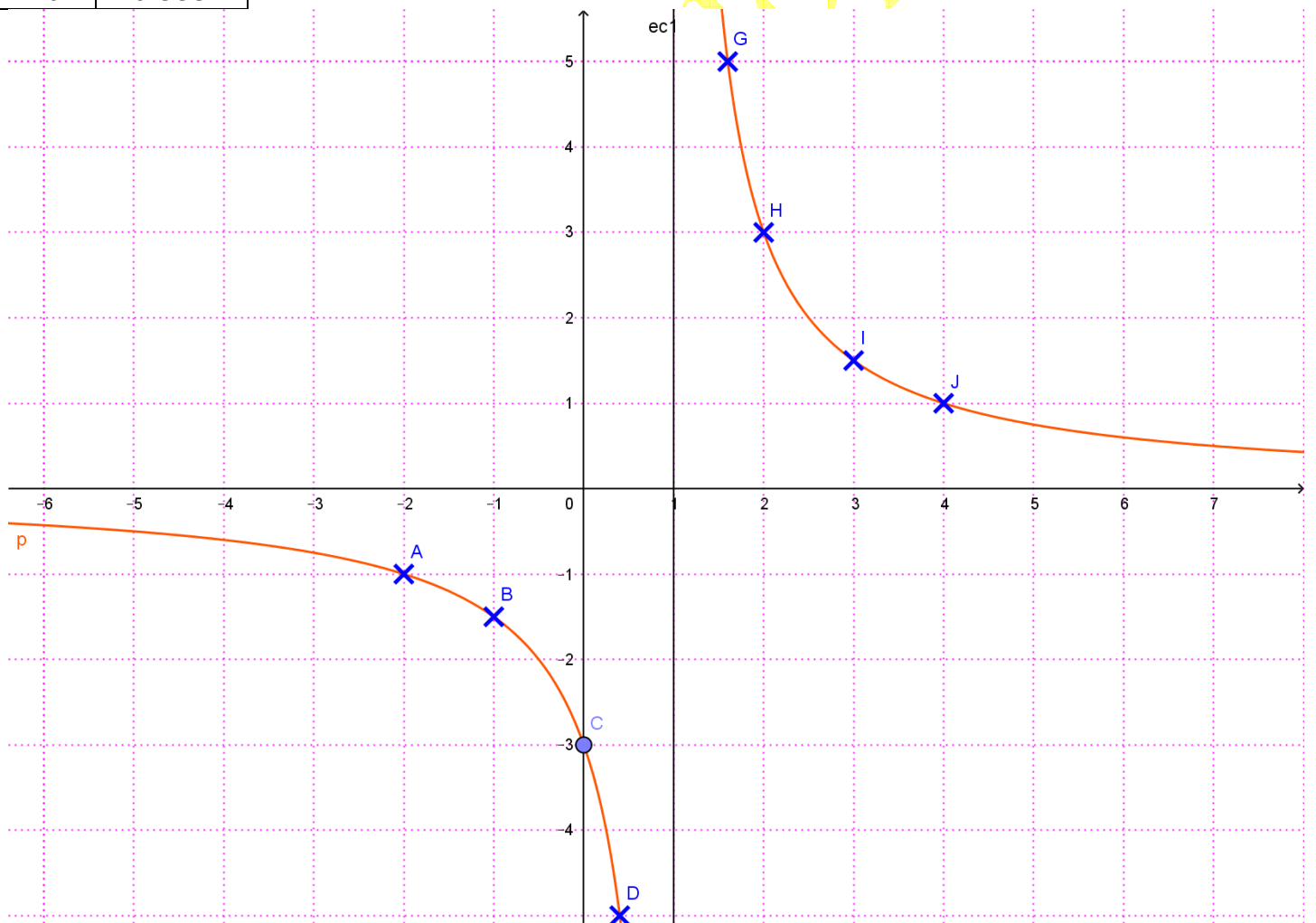
Pág. 119

4 c

$$y = \frac{3}{x-1}$$

$$x-1=0; \quad x=1 \rightarrow \text{Dom } y = \mathbb{R} - \{1\}$$

x	$\frac{3}{x-1}$
-2	-1
-1	-1'5
0	-3
0'4	-5
0'8	-15
1'2	15
1'6	5
2	3
3	1'5
4	1
10	0'333

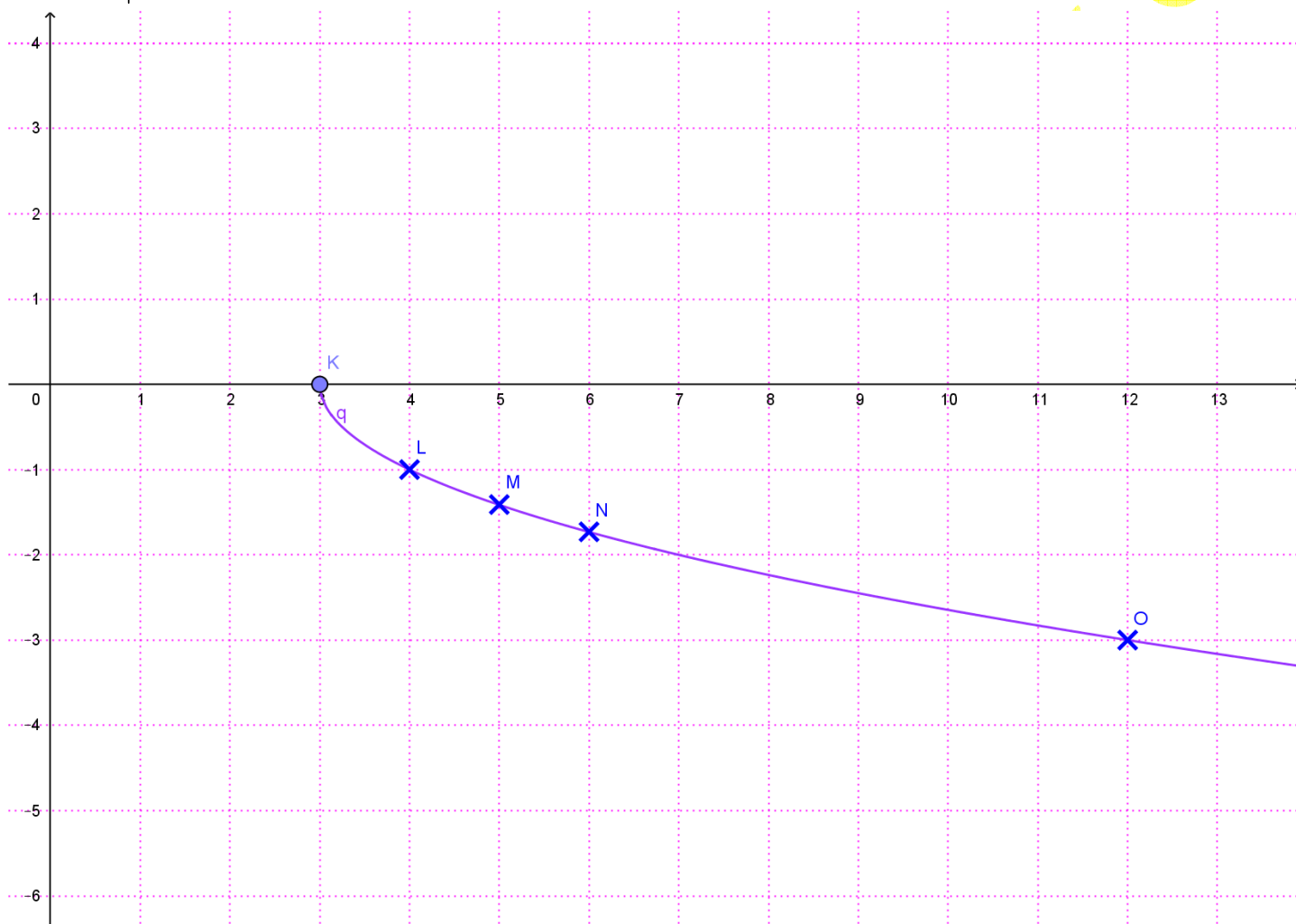


4 f

$$y = -\sqrt{x-3}$$

$$x-3 \geq 0; \quad x \geq 3 \quad \text{Dom } y = [3, +\infty)$$

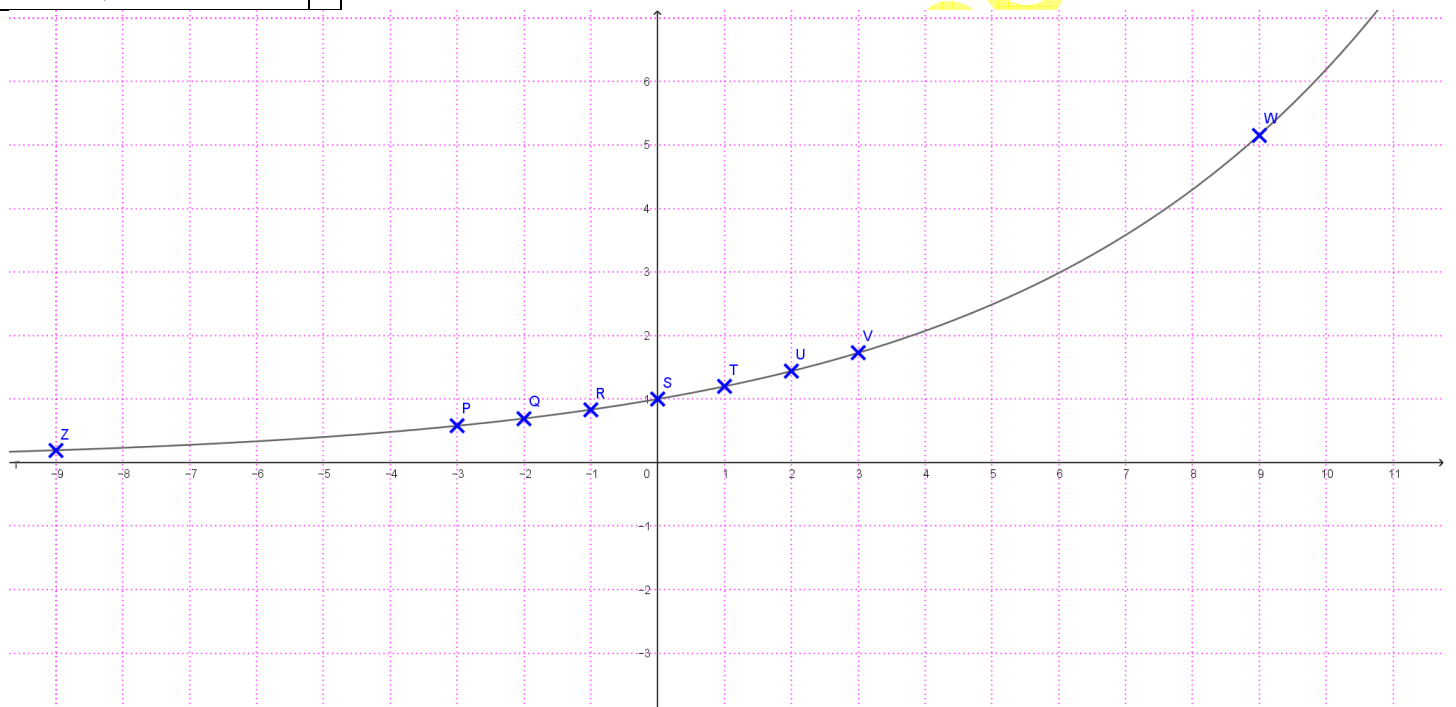
x	$y = -\sqrt{x-3}$
3	0
4	-1
5	-1.41
6	-1.73



5 a

Representar $y = 1'2^x$

x	$y = 1'2^x$
-3	0'58
-2	0'69
-1	0'83
0	1
1	1'2
2	1'44
3	1'73



WWW